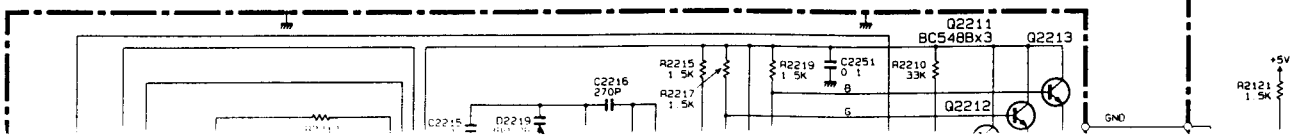
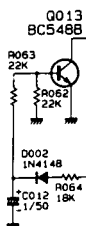
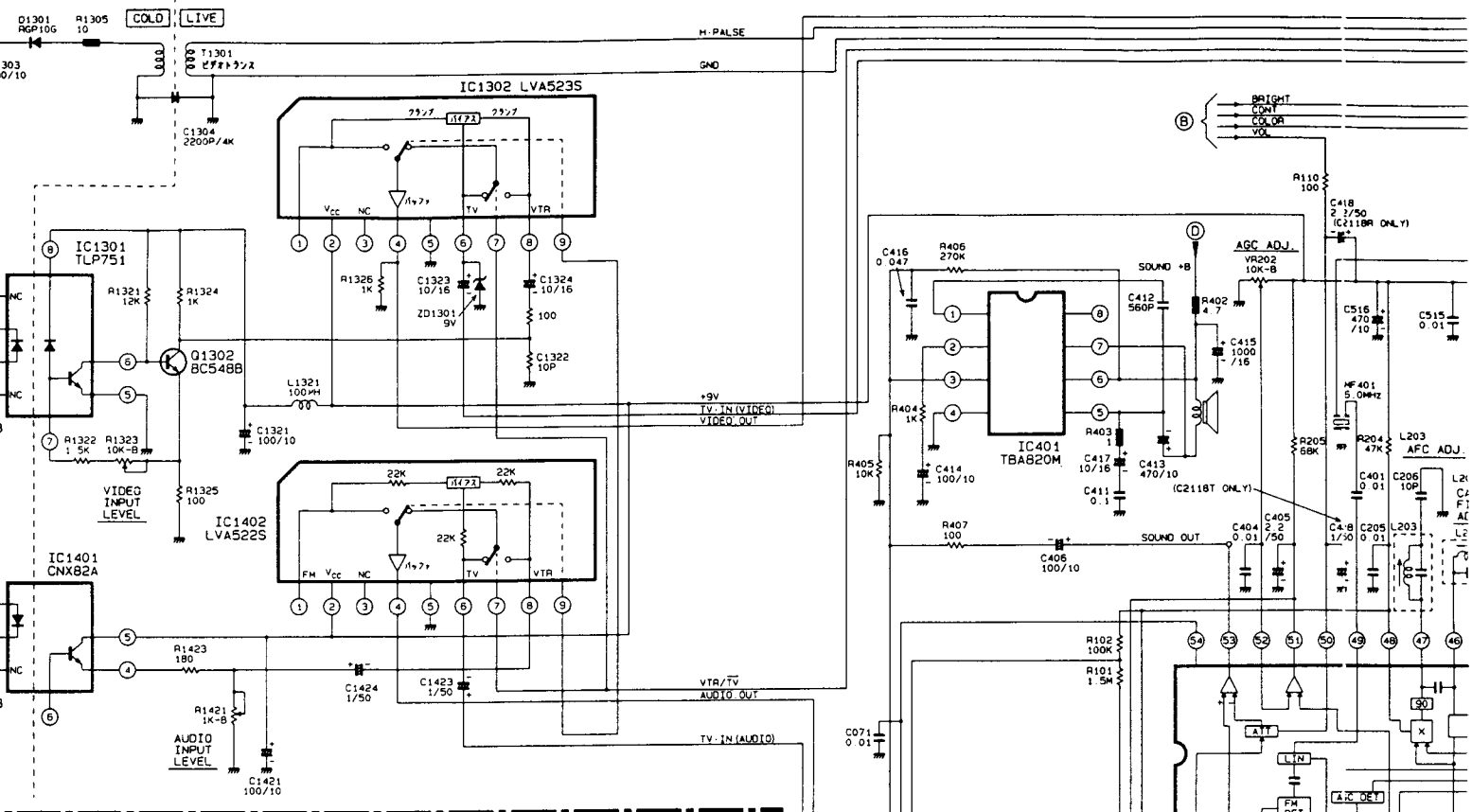


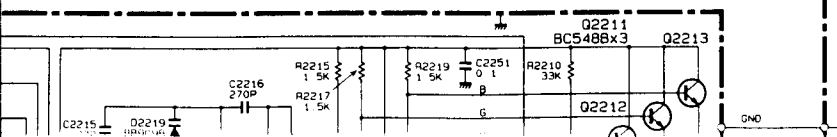
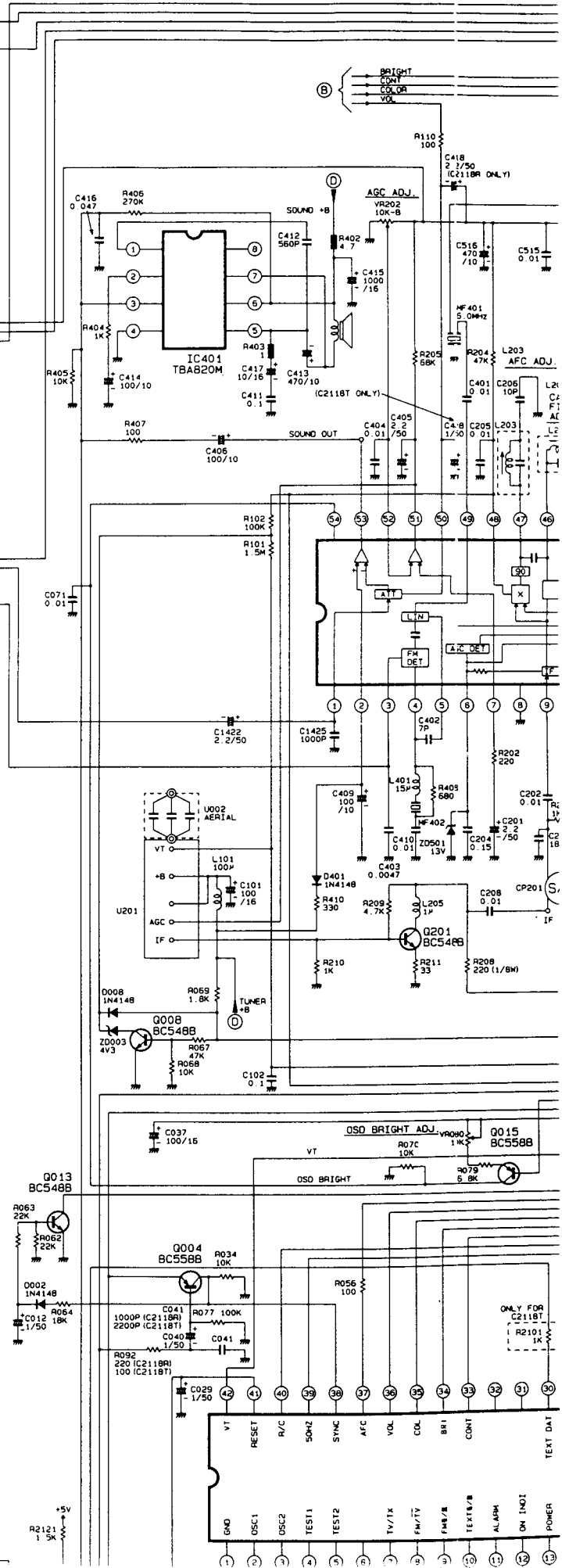
1. W指定の無い抵抗は、1/16Wを示します。

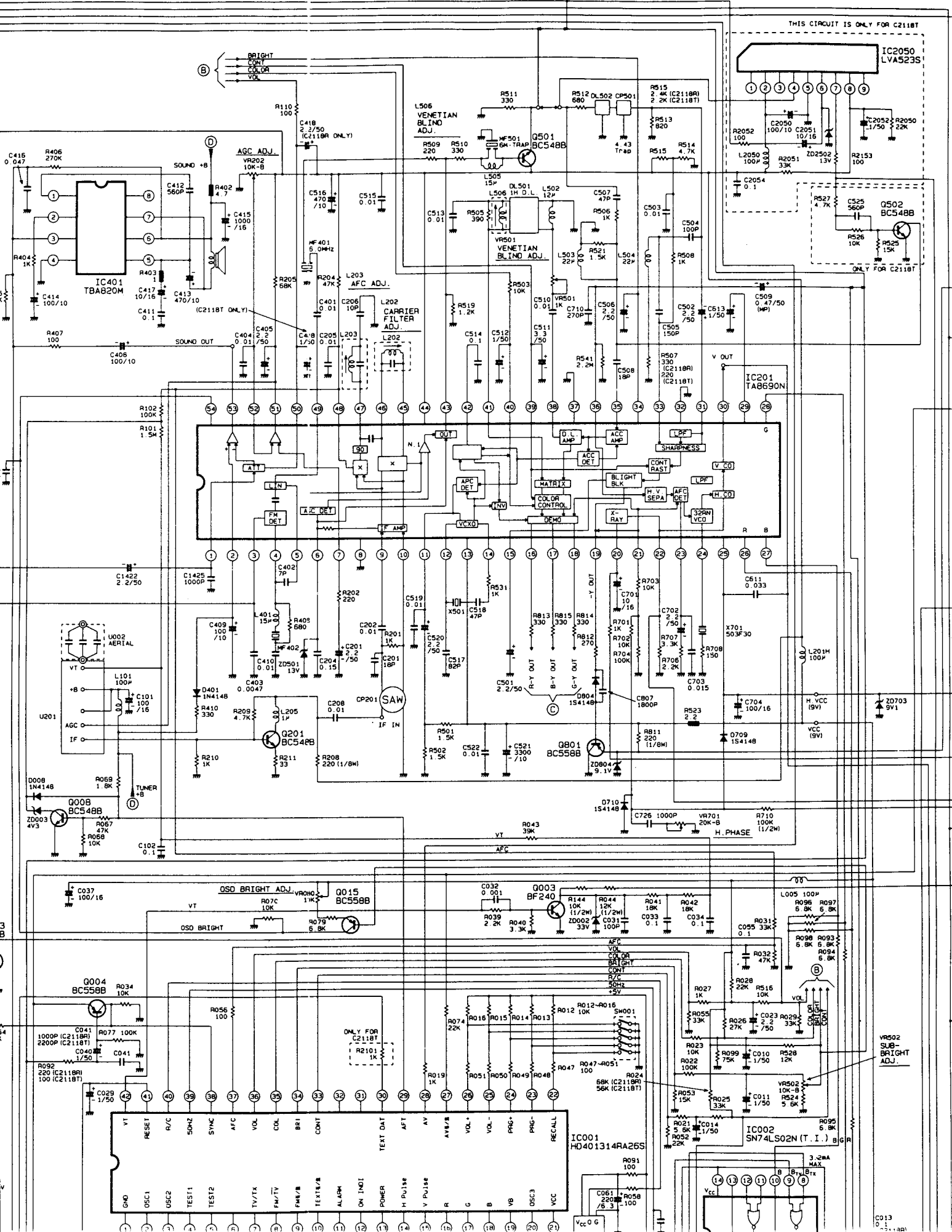
THE RESISTERS WITHOUT MARKING W (WATTAGE) SHOWS THE ONES OF 1/16W.





MARKING W (WATTAGE) SHOWS THE ONES OF 1/16W.





THIS CIRCUIT IS ONLY FOR C2118T

IC2050 LVA5235

BRIGHT  
CONT  
COLOR  
VOLUME

AGC ADJ.  
VR202 10K-B

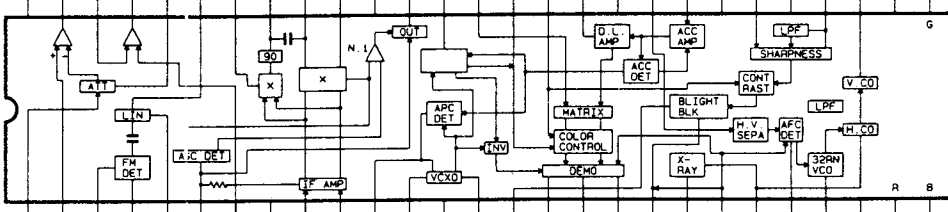
VENETIAN  
BLIND  
ADJ.  
Q501 BC548B

VENETIAN  
BLIND  
ADJ.  
VR501

AFC ADJ.  
L203

CARRIER  
FILTER  
ADJ.  
L202

IC201 TAB690N



IF IN

Q201 BC548B

Q801 BC558B

OSD BRIGHT ADJ.  
VR002 10K-B

Q015 BC558B

Q003 BF240

Q004 BC558B

IC001 HD401314RA265

IC002 SN74LS02N (T. I.)

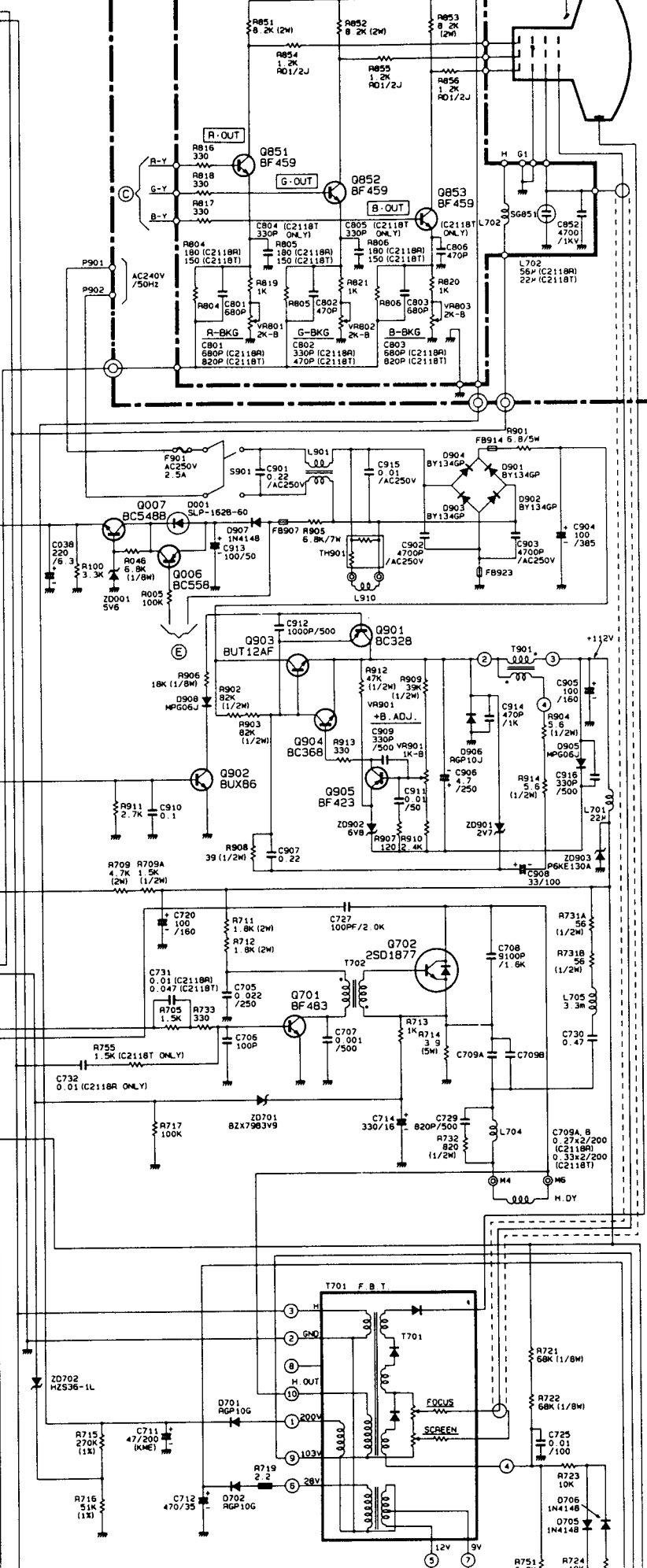
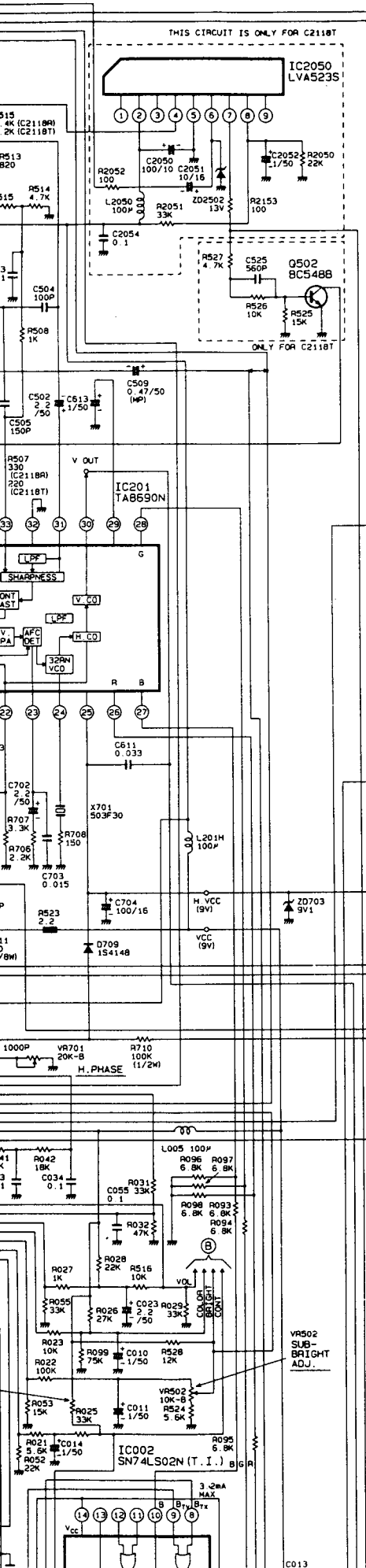
C013 0.1

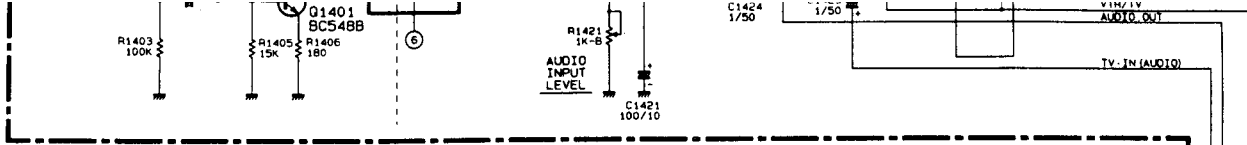
MAIN P.W.B.

CPT P.W.B.

E902 B160AD IN CONNECTOR

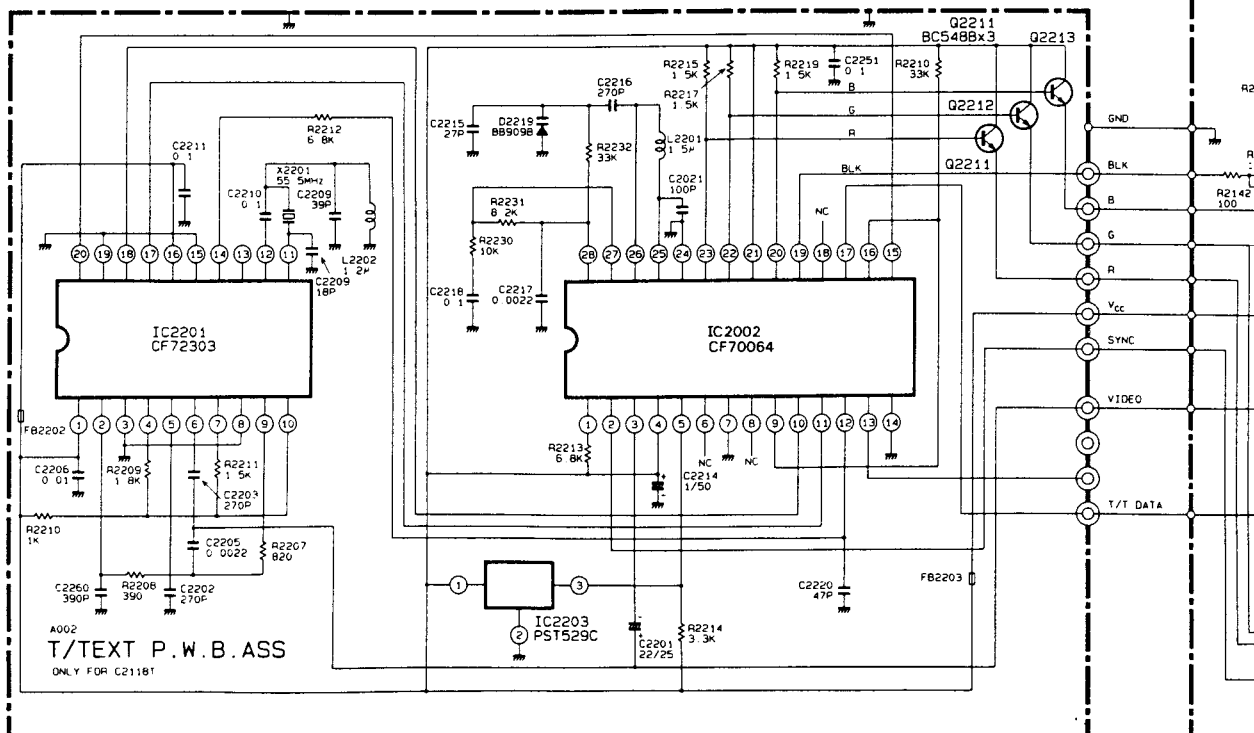
AS1EAL30X11 FOR C2118R  
AS1J5V61X21(M) FOR C2118T



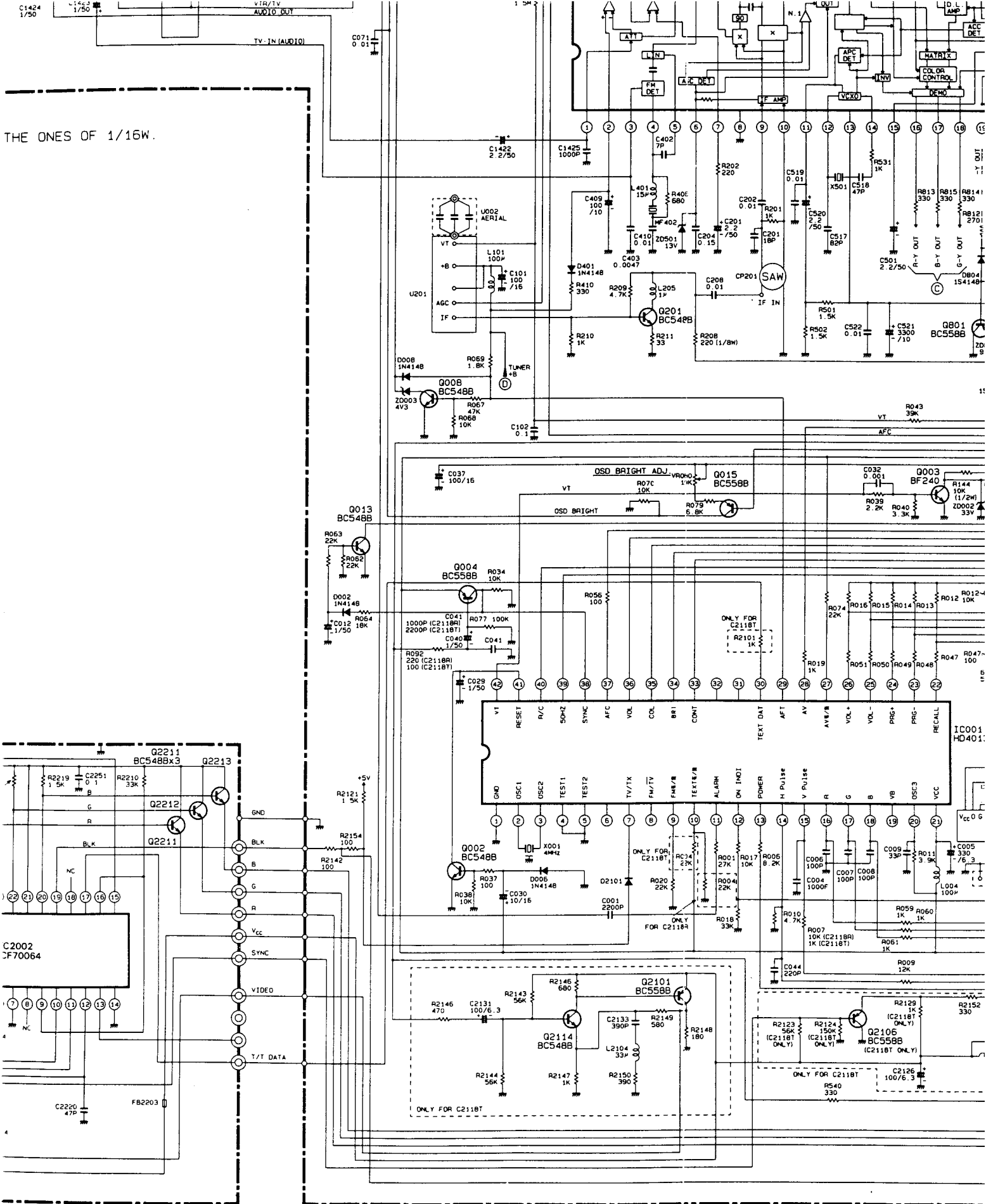


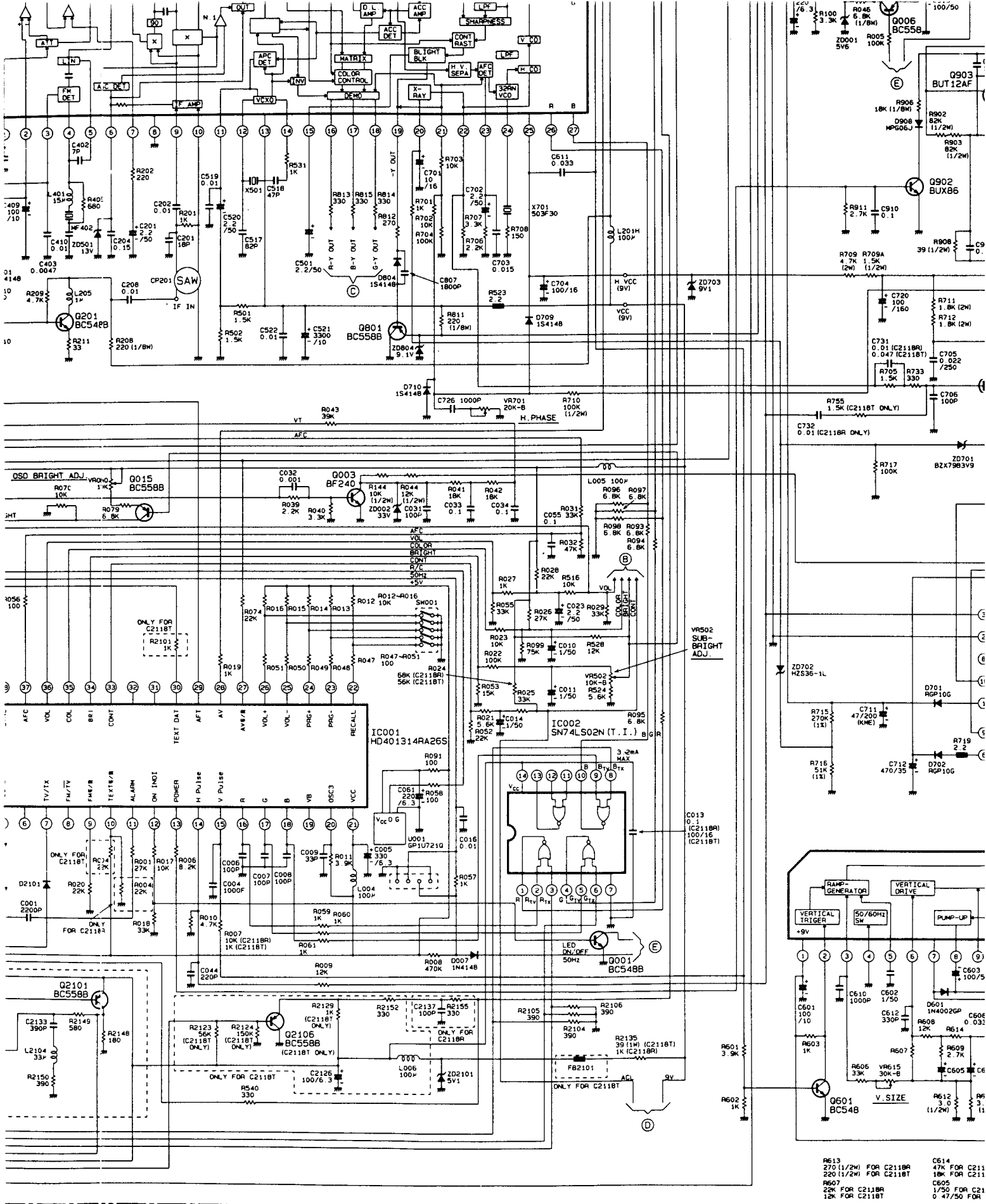
1. W指定の無い抵抗は、1/16Wを示します。

THE RESISTERS WITHOUT MARKING W (WATTAGE) SHOWS THE ONES OF 1/16W.

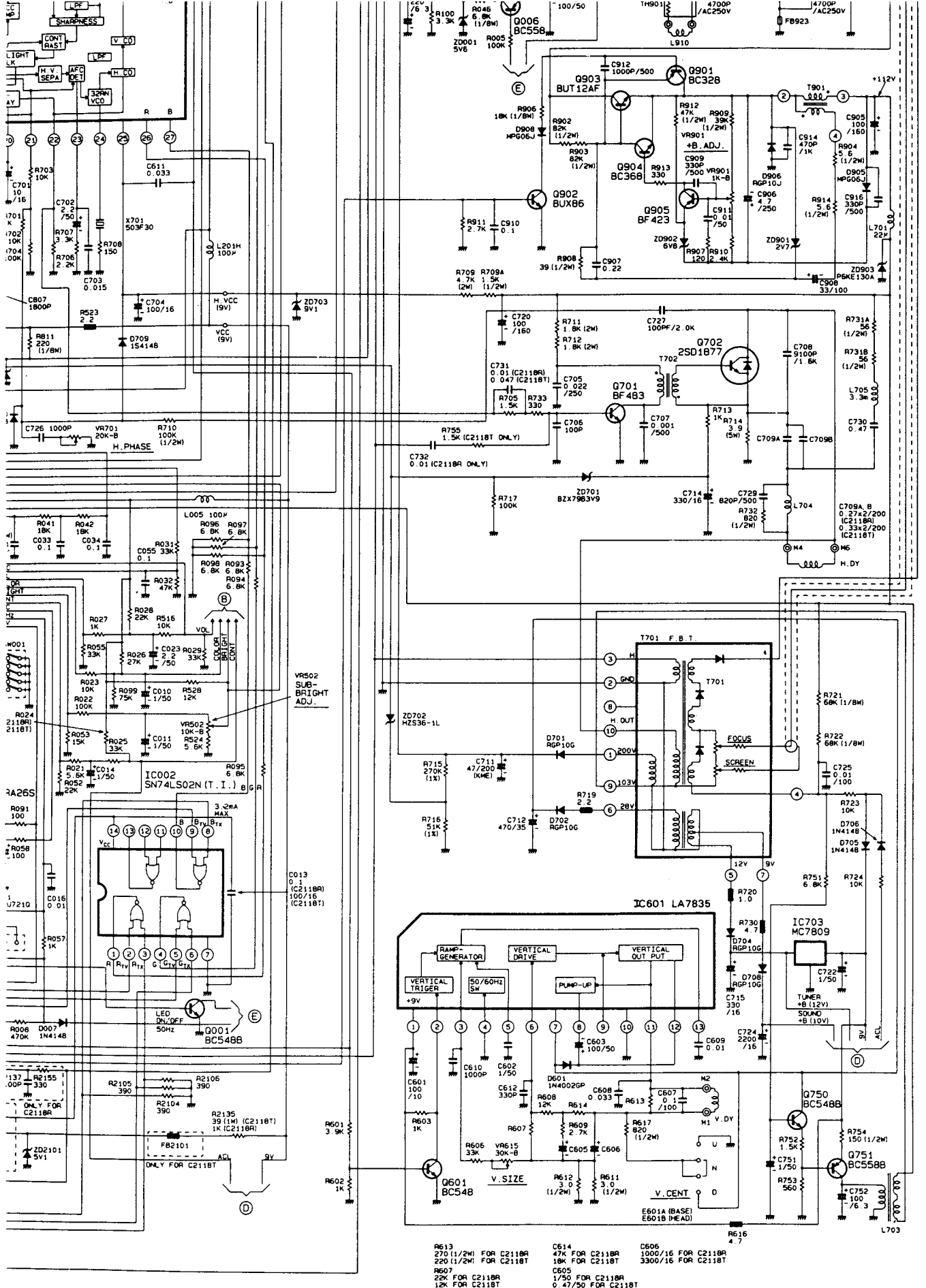


THE ONES OF 1/16W.





BASIC CIRCUIT DIAGRAM OF

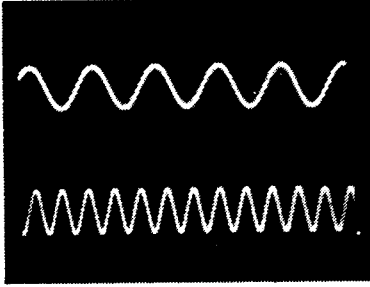


R613 220 (1/2W) FOR C2118R C614 47K FOR C2118R C606 1000/16 FOR C2118R  
 220 (1/2W) FOR C2118T 10K FOR C2118T 3300/16 FOR C2118T  
 R607 22K FOR C2118R C605 1/50 FOR C2118R  
 10K FOR C2118T 0.47/50 FOR C2118T

BASIC CIRCUIT DIAGRAM OF C2118T&R (G7PS MKII CHASSIS)

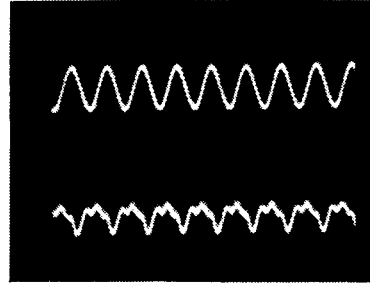


**SOME WAVEFORMS FOR THE C2118R/T CHASSIS. TAKEN USING A 10:1 PROBE, SCOPE SET TO 20 $\mu$  SECS/CM UNLESS OTHERWISE STATED. COLOUR, CONTRAST AND BRILLIANCE SET TO GIVE NORMAL VIEWING LEVELS.**



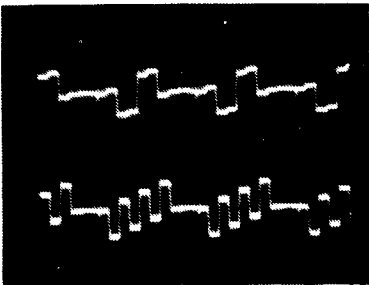
IC201 pins 1, 2, 3.  
1v0 p.p. at 0.5m secs/cm.  
Pin 2 measured at maximum volume

IC201 pins 4 + 5  
1v0 p.p. at 0.2 $\mu$  secs/cm



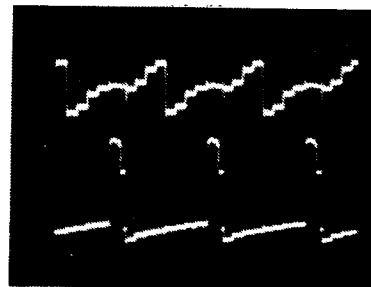
IC201 pin 12  
0v3 p.p. at 0.2 $\mu$  secs/cm

IC201 pin 14  
1v0 p.p. at 0.2 $\mu$  secs/cm



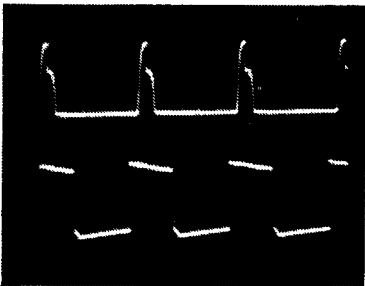
IC201 pin 16  
2v5 p.p.

IC201 pin 17  
3v0 p.p.



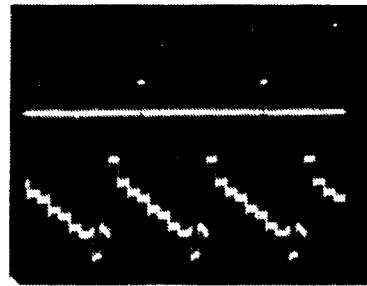
IC201 pin 18  
1v5 p.p.

IC201 pin 19  
8v0 p.p.



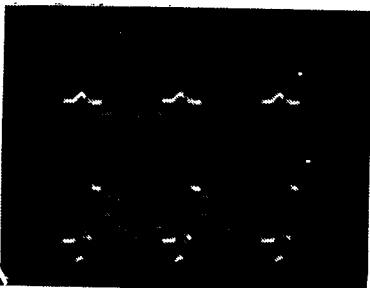
IC201 pin 21  
3v0 p.p.

IC201 pin 22  
6v0 p.p.



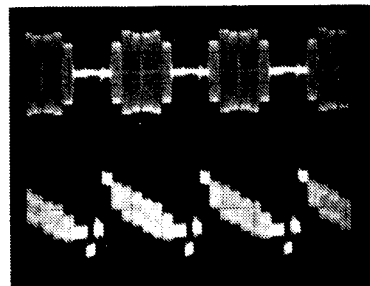
IC201 pin 30  
5v0 p.p. at 5 m secs/cm

IC201 pin 31  
0v8 p.p.



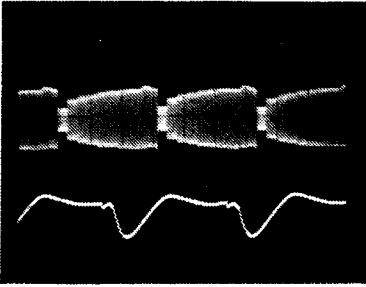
IC201 pin 35  
0v1 p.p.

IC201 pin 36  
1v5 p.p.



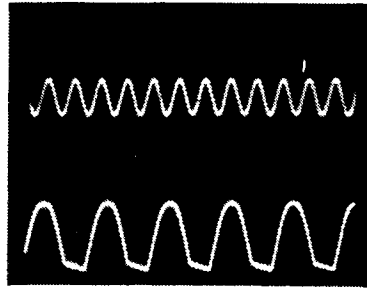
IC201 pin 38  
1v2 p.p.  
IC201 pin 41  
0v2 p.p.

IC201 pin 43  
1v8 p.p.



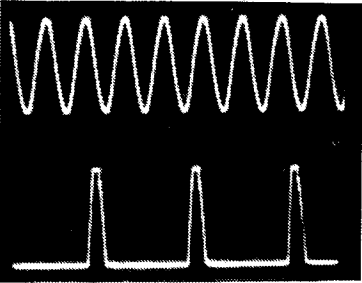
IC201 pins  
45 + 46  
0v2 p.p.

IC201 pin 48  
0v5 at 5 m  
secs/cm



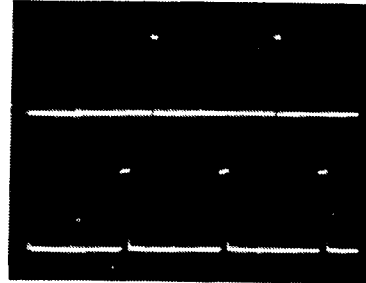
IC201 pin 49  
0v1 p.p. at 0.2μ  
secs/cm

IC201 pin 53  
3v0 p.p. maximum  
volume at 0.5 m  
secs/cm



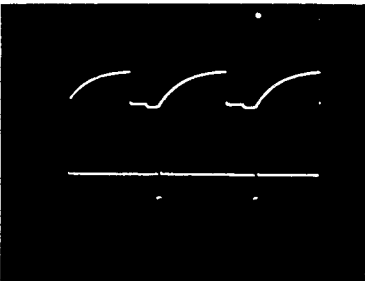
IC001 pins 2 + 3  
3v0 p.p. at 0.2μ  
secs/cm pin 2  
4v0 p.p. at 0.2μ  
secs/cm pin 3

IC001 pin 14  
6v0 p.p.



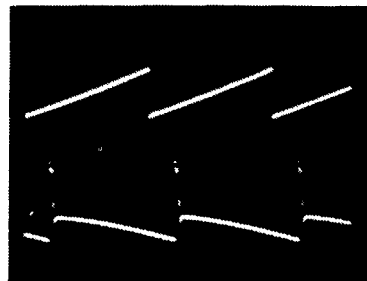
IC001 pin 15  
5v0 p.p. at 5 m  
secs/cm

IC001 pin 38  
5v0 p.p.



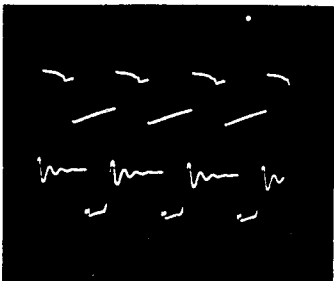
IC001 pin 39  
4v0 p.p. at  
5m secs/cm

IC601 pin 2  
8v0 p.p. at  
5m secs/cm



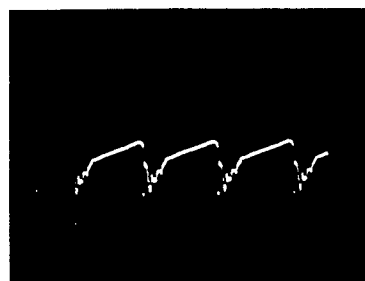
IC601 pin 5  
1v8 p.p. at 5m  
secs/cm

IC601 pin 11  
42v p.p. at 5m  
secs/cm



Q701 base  
4v0 p.p.

Q701 collector  
60v p.p.



Q702 base  
15v p.p.